

IVD solutions through partnership



Autoimmune Diagnostics Immunofluorescence

- All products CE marked
- Single reagents and complete kits available
- Single tissue und tissue combinations
- Tissue sections of different species

Immunofluorescence

Reagents for the Detection of Autoantibodies

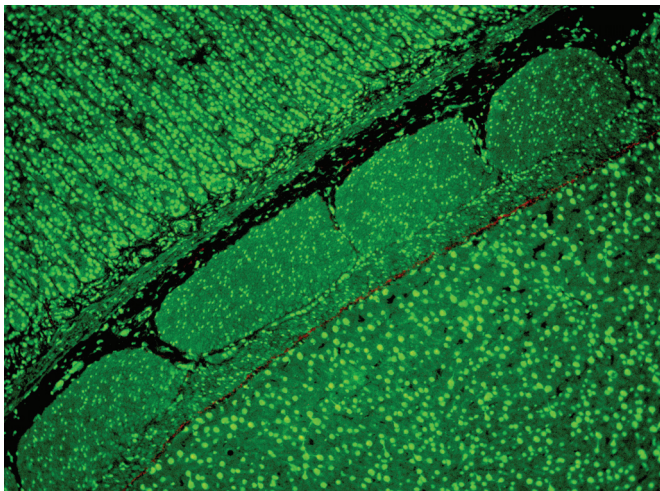
Autoimmune diseases are characterised by antibodies which are directed against self-antigens. These autoantibodies can be detected on human or animal tissues or cells. Beside ELISA, blot and immunodiffusion, indirect immunofluorescence assay (IFA) is considered as a standard test for screening and confirmation of autoantibodies.

- **Cells**
 - HEp-2 cells
 - Crithidia luciliae (CLIF)
 - Human granulocytes
- **Tissue sections**
 - Single substrates
 - 2- or 3 substrate combinations
- **Species**
 - Rat
 - Rabbit
 - Primate
- **Reagents**
 - Complete test kits
 - Slides
 - Positive and negative controls
 - IgG-, IgM-, IgA- and polyvalent conjugates

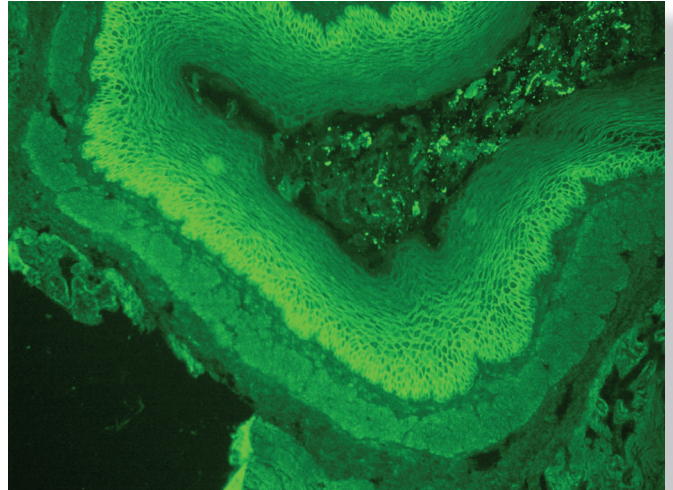
Design Features

Slides (substrate)

HEp-2 cells are cultivated as a monolayer directly on the slide. This method allows the expression of all typical ANA proteins plus other fibrillar antigens important for cellular attachment, e.g. actin fibres. A careful but

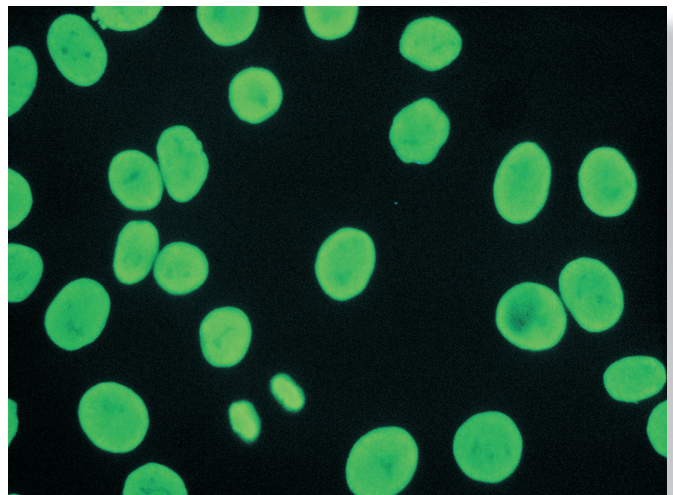


ANA (Combi-3 stomach/kidney/liver)



ASA (Monkey Oesophagus)

effective fixation step stabilises antigens which are known to degrade easily such as SS-A (Ro) and keeps their epitopes in reactive conformation. Cryosections are transferred to the well and fixed immediately before being lyophilised. Slides are vacuum-sealed afterwards to guarantee a stability of at least 2 years without any loss in quality. This procedure allows the stabilisation of an intact cellular morphology within the section. Unspecific binding of fluorochrome is also minimised.



HEp-2 homogenous

Reagents

All controls as well as mono- and polyvalent conjugates are supplied ready to use. All reagents are optimised for use in tests listed below.

Mast Diagnostica GmbH is a well-known manufacturer of diagnostic products and offers a wide range of tests for autoimmune diseases and a comprehensive customer service.

Cellular substrates

HEp-2

Conjugate: IgG

Most commonly used substrate to detect ANA. Well standardised, best production methods allow the detection of delicate autoantibodies such as anti-SS-A (Ro), anti-Scl-70, anti-PCNA or anti-actin. All mitotic phases are expressed under non-synchronising cell culture conditions.

Crithidia luciliae (CLIF, native DNA, dsDNA)

Conjugate: IgG

Still widely used as a gold standard assay for the detection and confirmation of anti-dsDNA antibodies (specificity appr. 100 %).

Tissue sections: Single substrate

Kidney (rat) / detection of AMA, AEA

Conjugate: polyvalent

Antigenes: mitochondria in proximale and distal tubular cells

Kidney (primate) / detection of GBM

Conjugate: IgG

Antigenes: glomeruli, glomerular basement membrane (type IV collagen)

Stomach (rat) / detection of ASMA, APCA

Conjugate: polyvalent

Antigenes: parietal cells, peptic cells, smooth muscle, inter-glandular fibrillae (F-actin)

Skeletal muscle (rat) / detection of SKMA

Conjugate: polyvalent

Antigenes: sarcolemma, actin and myosin filaments, contractile elements of striated muscle mostly in the sarcomere, intercalated discs

Tongue (rabbit) / detection of ASA

Conjugate: polyvalent

Antigenes: desmosomes, desmogleins, antigens in the intercellular substance of squamous epithelium cells (pemphigus), epidermal basement membrane (bullous pemphigoid)

Oesophagus, distal (primate) / detection of EmA

Conjugate: IgA

Antigenes: endomysial fibres of lamina muscularis mucosae

Tissue sections: Combination 2

Substrates are always combined with rat kidney sections to detect and differentiate heterophilic autoantibodies and specific ANA, AMA and/or ASMA.

Heart/Kidney (rat) /

detection of AFA, AIDA, IFA

Conjugate: IgG

detection of HMA, AFA, AIDA, IFA

Conjugate: polyvalent

Antigenes: sarcolemma, interfibrillar structures, myosin, actin, intercalated discs

Adrenal/Kidney (primate/rat) / detection of NNA

Conjugate: polyvalent

Antigenes: adrenal antigens in zona fasciculata and zona glomerulosa, mitochondria, rat tissue for confirmation of AMA antibodies

Thyroid/Kidney (primate/rat) / detection of ATA

Conjugate: polyvalent

Antigenes: thyroid follicles (TG) and thyroid epithelial cells (microsomal, TPO)

Tissue sections: Combination 3

Stomach/Kidney/Liver (rat)

detection of LKM, ABBA, ARA, ARIA

Conjugate: IgG

detection of ANA, AMA, ASMA, APCA, ABBA, ARA, ARIA

Conjugate: polyvalent

Antigenes: liver/kidney microsomal antigen (LKM), other specifications are listed under single substrate

Ordering Information

Complete Kits and Slides

Product C€	Order Code complete Kits	Order Code Slides	Content
ANA HEp-2	606045	616145	10 x 5
ANA HEp-2	606046	616146	10 x 10
dsDNA	606010	---	10 x 5
Monkey Esophagus, distal (EmA)	606070	616170	10 x 5
Monkey Kidney (GBM)	606088	616188	10 x 5
Rat Stomach (ASMA/APCA)	---	616115	10 x 5
Rat Striated Muscle (SKMA)	606064	616175	10 x 5
Monkey Thyroid / Rat Kidney (ATA)	606030	616130	10 x 5
Monkey Adrenal / Rat Kidney (NNA)	606055	616155	10 x 5
Rat Heart/ -Kidney (HMA)	606025	616125	10 x 5
Rat Stomach/ -Kidney/ -Liver (AMA)	606023	616123	10 x 10

Conjugates

Product C€	Content 2 mL	Content 3 mL	Content 10 mL
Anti-human IgG (H + L chain)	621012	621013	621010
Anti-human IgG (γ chain)	626291	626284	626283
Anti-human IgM (μ chain)	626292	626285	621014
Anti-human IgG, IgA, IgM (polyvalent)	626290	626286	621015


Other Reagents

Product C€	Order Code	Content
IFT serumdiluent, special (5 x concentrate)	620100	2 x 10 mL
PBS Buffer (for 1,0 Liter aqua dest.)	626297M	1 Sachet
Evans Blue (ready to use)	626298	3 mL
Mounting medium (ready to use)	626299	3 mL

V. 2013-11-27

United Kingdom
Mast Group Ltd.
Mast House
Derby Road, Bootle
Merseyside L20 1EA

Tel: +44 (0)151 933 7277
Fax: +44 (0)151 944 1332
e-mail: sales@mastgrp.com

 **Germany**
Mast Diagnostica GmbH
Feldstraße 20
DE-23858 Reinfeld

Tel: +49 (0)4533 2007 0
Fax: +49 (0)4533 2007 68
e-mail: mast@mast-diagnostica.de

France
Mast Diagnostic
115 rue Jules Barni
CS 91106
80011 Amiens CEDEX 1

Tél: +33 (0)322 80 80 67
Fax: +33 (0)322 80 99 22
e-mail: info@mast-diagnostic.fr

www.mastgrp.com